

SMEC

SLV 8500/M

VERTICAL TURNING CENTER

SMEC

SLV 8500 Series

VERTICAL TURNING CENTER



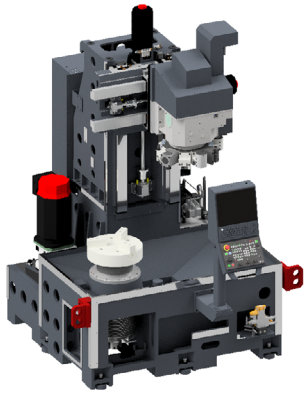
High Rigidity, High Precision Vertical Turning Center Designed to Provide Both Heavy Duty and High Precision Machining

- Superb structural design supporting both best-in-class heavy duty and precision machining
- High precision heavy duty cutting is ensured by the box guideways and thermal growth minimizing structural design
- The large screen OP Panel enhances operator ease of use
- The high-speed indexing turret significantly reduces non-cutting time while increasing productivity

SMEC

Machine Tools

Design



Travel

X AXIS **490**(-65~425) mm
(19.30(-2.56~16.74) inch)
Z AXIS **780** mm
(30.71 inch)

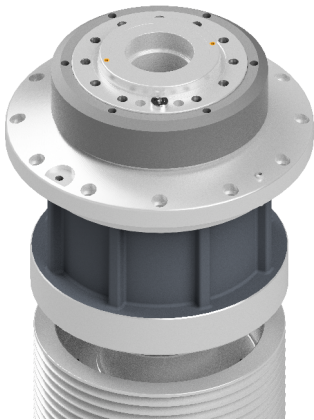
Travel

X/Z AXIS **20** m/min

High Rigidity Ball Screw

14% increase in Z-axis rigidity
3% increase in X-axis rigidity

Main Spindle



Spindle speed

2,000 rpm (18" Chuck)

Spindle power

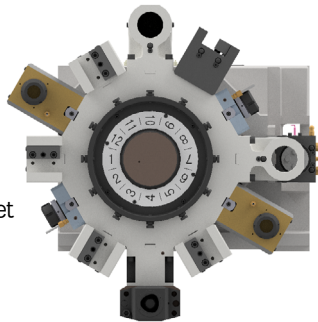
Belt : **37 / 22** kW
(49.62 / 29.51 hp)
Gear Box (Opt) : **37 / 30** kW
(49.62 / 40.24 hp)

Max. spindle torque

Belt : **1,659** N.m
(1223.62 lbs.ft)
Gear Box (Opt) : **3,254** N.m
(2400.03 lbs.ft)

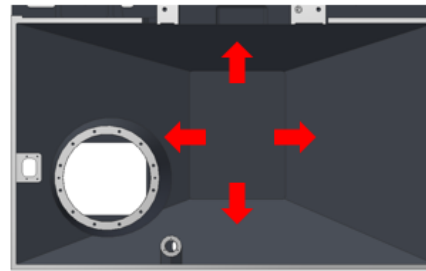
Turret

Servo-driven 12 station turret for high precision, high power cutting 11kW, 140Nm high torque milling turret offering powerful milling capabilities



	SLV 8500	SLV 8500M
Max. swing dia.	ø736mm (28.98 inch)	ø766mm (30.16 inch)
Mill sp.	-	140Nm (103.26 lbs.ft)
Max. torque Curvic clamping force (50bar)	9,346kgf (20,604.41 lb)	

Ease of Use

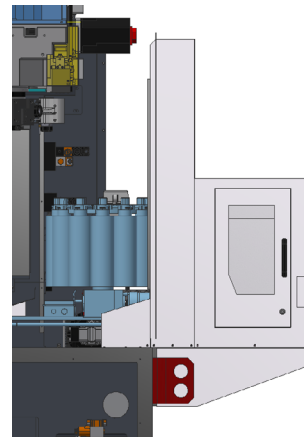
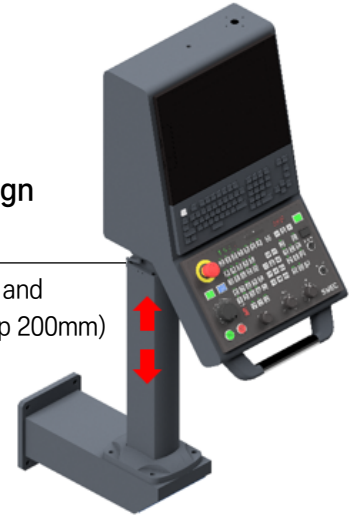


Expanded chip discharge area

Improved chip removal from machine

Improved OP panel design and adjustable height

Easier to use angled keyboard and adjustable height capability (up 200mm)



Magazine & ATC (Opt)

CAPTO C6 based automatic tool changer for increased tool capacity and avoiding interference with adjacent tools

Magazine & ATC (Opt.)	unit	SLV 8500/M
Tool storage capacity	EA	12
Tool shank	-	CAPTO C6
Max. tool diameter	mm (inch)	ø90 (3.55)
Max. tool length	mm (inch)	400 (15.75)
Max. tool mass	kg (lb)	10 (22.05)

Machine Specifications

[]: Optional

DESCRIPTION		Unit	SLV 8500	SLV 8500M
Capacity	Swing over Bed		mm (inch)	
	Recommend turning diameter		mm (inch)	
	Maximum turning diameter		mm (inch)	
	Maximum turning length		mm (inch)	
Travels	Travel	X Axis	mm (inch)	
		Z Axis	mm (inch)	
	Feed rate	X Axis	m/min (ipm)	
		Z Axis	m/min (ipm)	
	Guideway type		-	
Main Spindle	Spindle speed [Max.]		rpm	
	Spindle drive mechanism		-	
	Spindle torque for turning [Max./Cont.]		N·m (lbs.ft)	
	Spindle nose		ASA	
	Min. spindle indexing angle		deg	
Turret	Number of tool stations		ea	
	Shank size for square tool		mm (inch)	
	Shank diameter for boring bar		mm (inch)	
	Live tool torque [Max./Cont.]		N·m (lbs.ft)	
	Rotary tool spindle speed		rpm	
ATC (OPT.)	Tool storage capacity		ea	
	Tool shank		-	
	Max. tool diameter		mm (inch)	
	Max. tool length		mm (inch)	
	Max. tool mass		kg (lb)	
Tool Setter(OPT.)	Tool Presetter Type		-	
Motor	Main spindle	Capacity (Max./Cont.)	kW (hp)	
	Rotary tool spindle	Capacity (Max./Cont.)	kW (hp)	
CNC Controller (Monitor)		-		



SMEC Co., Ltd.

157-10, Goldenroot-ro, Juchon-myeon, Gimhae-si,
Gyeongsangnam-do, Republic of Korea
Tel +82 55 340 4800 / Fax +82 55 340 4740

www.smeccmachinetools.com